

Mussel farming in Sweden -with focus on the Baltic Sea

Susanna Minnhagen, Kalmar municipality

BSSSC meeting

19 Sept 2019

Klaipeda, Lithuania

Mussel farming in west-coast Sweden:

- 2000-3000 tons per year, and on the rise
- About 9 registered companies
- Food mussels



Mussel farming is sustainable and resource-efficient Blue Growth because:



- No land is used
 - No freshwater
 - No pesticides
 - No antibiotics
 - No fertilizer
- on the contrary!

Blue Mussels are filtrators - they eat microscopic algae

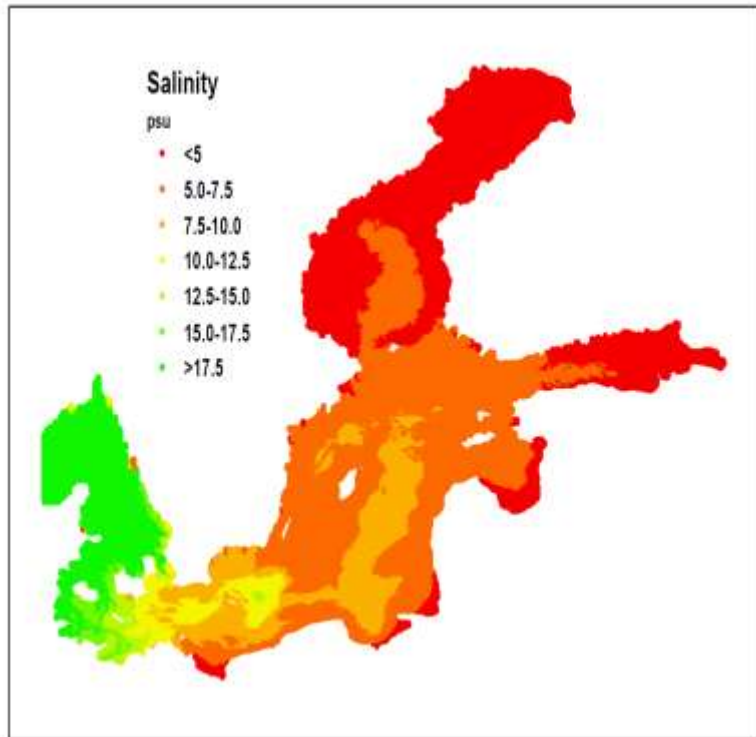


- 5-7 l water/h
- Improve transparency of water
- At harvest, nutrients are taken up from the sea to land

What's in it for East coast Sweden and other Baltic Sea Regions??



Low salinity => Mini mussels



Western Baltic Baltic proper
6-8 cm 3-4 cm

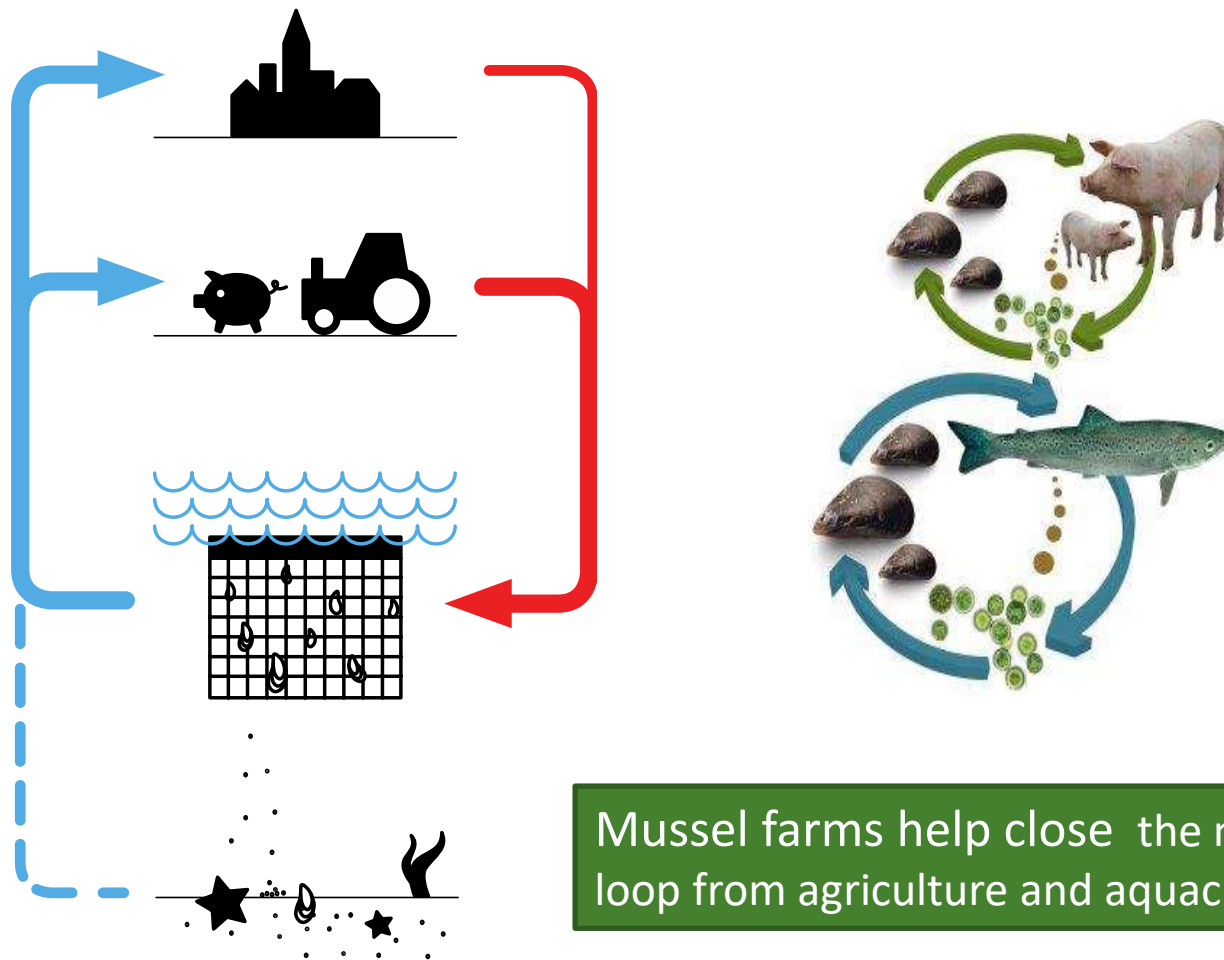
We need to adapt technology and marketing to Baltic Sea conditions, in order to make mussel farming a viable business here

Baltic Blue Growth project 2016-2019:

What we got: 75ton!!



Why should regions become actively involved in this development?



Mussel farms help close the nutrient loop from agriculture and aquaculture

Example from the Kalmar Region:



A yearly harvest of **3000 tons** of blue mussel could

- Replace 75 % of import of fish-meal to the local feed-factory
- Compensate 20% of the needed reduction in phosphorous leakage from farmlands
- Boost local jobs and industry

What can regions do to facilitate for mussel farms in the Baltic Proper to reach viable business?

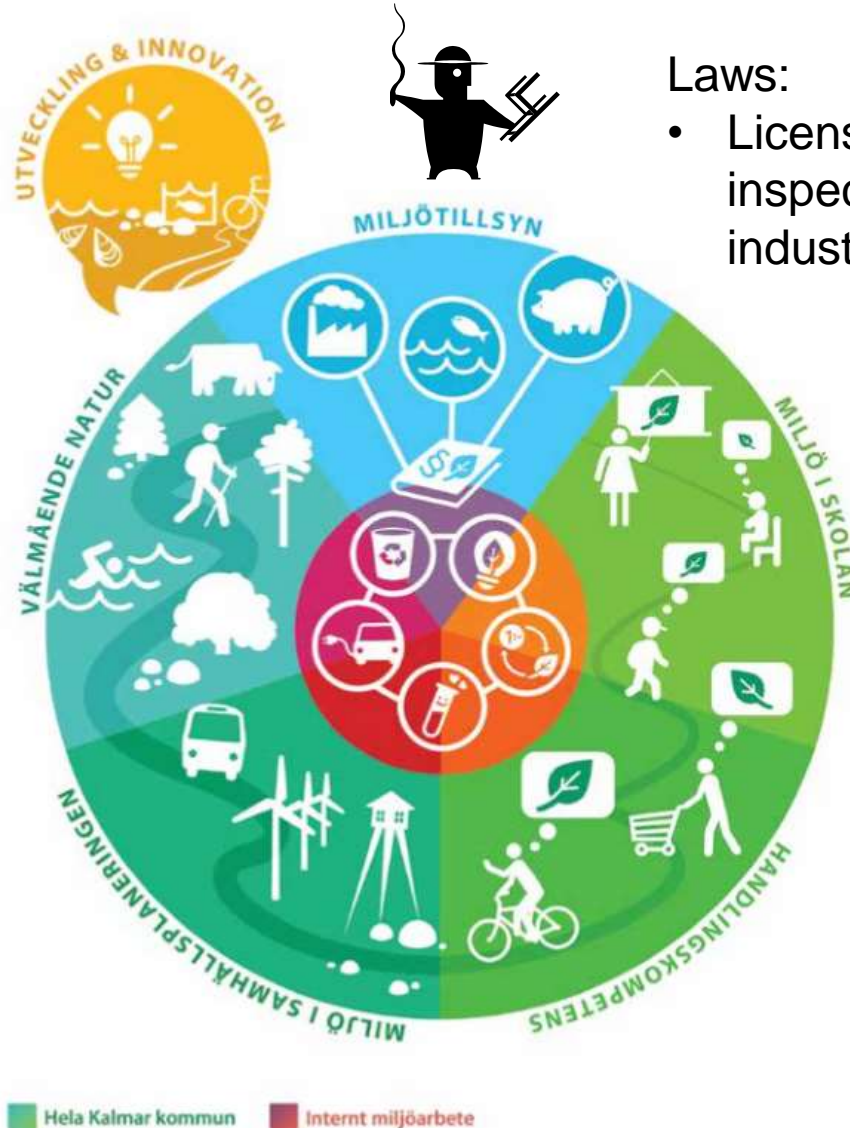
- Get necessary stakeholders to collaborate in order to develop a successful value chain
- Clarify the legal processes
- Demonstration projects, "Best practice"
- Use international networks to arrange workshops for un-aware policy makers and legislators

If you are a student who wants to "save the world", consider a job at your local municipality!



Policies:

- Land and water lease agreements
- Public procurements



Laws:

- Licensing and regular inspections of polluting industry and farms



Information:

- Encourage and support inhabitants to do environmentally friendly choices

Thank you for your attention

This work was supported by



Kalmar kommun
WWW.KALMAR.SE



Borgholms
kommun



Länsstyrelsen
Kalmar län



EUROPEAN
REGIONAL
DEVELOPMENT
FUND



KALMAR
SUNDS
KOMMISSIONEN

Baltic Blue Growth



Region
Östergötland



EUROPEAN UNION
EUROPEAN
REGIONAL
DEVELOPMENT
FUND