



Maritime Archaeological Society (MAS) was founded 1995.  
Its purpose is to support archaeological research, training  
and volunteer work under water

MAS has been a sole representative of under water archaeology  
among the Learned Societies\* of Finland since 2016.

MAS is neither a diving club or a public institution,  
but a "non government organisation" (NGO) recognized  
under Finnish law of the Learned Societies (TSV).



\*Finnish Learned Societies are  
NGOs recognized by the  
Finnish law as official,  
scientific representatives of  
their named science/art in  
addition and in support of the  
academic institutions like  
universities



# www.mas.fi

## KOULUTUS- JA TUTKIMUSLEIRI PORKKALASSA 29.6.-7.7.2019



Museovirasto



### NAS-intro meriarkeologian peruskurssi lauantaina 13.4. klo 9-17

Järjestämme kaikille avoimen meriarkeologian peruskurssin 13.4. Tieteiden talolla Helsingissä sekä Skype-kokouksena. Kurssilla käsitellään meriarkeologian perusteita ja se avaa NAS:n kansainvälisen koulutusjärjestelmän. Kurssin osallistujat saavat siitä todistuksen. Ilmoittaudu kurssille 11.4. mennessä tästä.

### Huhtikuun klubi-ilta 11.4. Tampereella

Huhtikuun kaikille avoin klubi-ilta järjestetään Tampereella Kulttuuritalo Laikussa torstaina 11.4. klo 18-20. Aiheena 1700-luvun kauppalaivojen hylkyjen tutkimukset sukeltamalla ja 3D-malleista sekä seuran koulutus- ja tutkimusleirin ohjelman esittely.

### Merihistorianpäivät Turussa, Forum Marinumissa 22.-24.3.2019

Suomen meriarkeologinen seura, Suomen merihistoriallinen yhdistys ja Merikeskus Forum Marinum järjestävät yhdessä 10. Merihistorian päivät maaliskuussa 2019 Turussa. Päivien pääotsikkona on Merenkulun riskit ja resurssit. Ilmoittautuminen 1.3. mennessä.



### Kevätkokous ja maaliskuun klubi-ilta 13.3. klo 17:30 Suomalaisella Klubilla

Ilmoittaudu 11.3. mennessä seuramme kevätkokoukseen ja maaliskuun klubi-iltaan, jossa kuulet ensi kesän tutkimusleiristä sekä Teemu Kerola kertoo kokemuksistaan NAS:n kenttätöleirillä.

### Museovirasto rahoittaa hylkypuiston tutkimusleiriä

Museovirasto on myöntänyt 10 000€ määrärahan seurallemme Porkkalan hylkypuiston kehittämiseen ja tutkimiseen 2019. Tämä varmistaa heinäkuun ensimmäisen viikon tutkimusleirin toteutumisen.

### Kulttuurirahasto rahoittaa hylkyjen ajoitusta

Harry Hendusen nimikkorahasto Suomen Kulttuurirahaston keskusrahastossa on myöntänyt seurallemme 35 000€ hylkyjen ajoitustutkimuksia varten Porkkalan Hylkypuistossa. Lue lisää



## Dimensions of our activities

### Scientific

Goal:  
**Baltic Sea  
Institution**

With:  
Universities, Finnish Heri-  
tage Agency, TSV, NAS,  
IKUWA,

For:  
maritime archaeologists,  
historians, volunteers

### Diving

Goal:  
**Maritime Archaeological  
Virtual Diving Club**

With:  
National Diving Assn,  
diving clubs, Meritaito,  
Communities

For:  
divers & volunteers

### Social

GOAL:  
**Maritime Archaeological  
Social Club**

With:  
Maritime Historical Society  
TSV, MAS Sweden  
...

For:  
volunteers, & everybody





# MAS brings together all stakeholders

- Scientific contribution
  - *Field work, publications, seminars*
- Training
  - *NAS & MAS trainings*
- Information services
  - *Digiarchive & 3D repository*
- Wreck parks
  - *Support & facilitation*
- VAMAPA & field work
  - *Coordination & facilitation*







# Porkkala Wreck Park

## [www.wreckpark.eu](http://www.wreckpark.eu)

- Ongoing program for researching, protecting and making available all Porkkala area wrecks for divers and nondivers alike.
- Started small 2018 with the support of Finnish Heritage Agency (FHA) and EU Cultural Heritage Year funds + volunteer divers
- Now a joint venture between MAS, University of Helsinki, FHA and numerous public bodies like Kirkkonummi community etc.  
*(more than 50 divers from 16 diving clubs around Finland participated in 2019 events)*
- SKR / Harry Hendunen Fund granted MAS 35k€ for dating
- 2018-2019 were “proof of concept” and now COVID19 ;-)





# Porkkala Wreck Park

Unique dive site for dozens of 16th to 19th century historic wrecks

Home  
Location  
Wrecks  
Blog



## WELCOME TO THE PORKKALA WRECK PARK

[Porkkala peninsula](#) reaches towards the southern shore of the [Gulf of Finland](#) and [Estonia](#) like no other [place](#) on the continental [Finland](#). Thus, the waters around Porkkala have always been of significant strategic value for the various [Navies](#) trying to control the Gulf. Likewise, it was the decision point for the [merchant vessels](#), as whether to trust on a local [pilot](#) and venture deep into the coastal [archipelago routes](#), providing shelter from the storms or whether to brave the open sea and hope for the best. The treacherous waters with thousands of rocks and hundreds of islands often got the better of both. Hence, the dozens of historical [wrecks](#) lying on the small area of just a few square miles.

The lack of [Teredo Navalis](#) (a wood eating sea worm) in the waters of the Gulf of Finland has enabled the survival of thousands of wooden wrecks, dating from the late medieval times up to the 20th century. Most of these wrecks are within reach of [recreational divers](#) in terms of depth and distance from the shore. As a consequence, the wrecks have suffered some "[diver wear](#)" similarly to coral reefs in many popular dive destinations. Therefore, [Finland's Maritime Archaeological Society](#) and its member associations like [dive club Nousu ry](#) have launched the Porkkala Wreck Park, together with the [Finland Heritage Agency](#) to protect the wrecks, by enabling easier access and more informed experience for the divers visiting the wrecks.



*Alko, a 19th century trade ship wreck*

The [blog](#) on this website serves as a documentation repository and discussion board for the project, while building the Porkkala Wreck Park. Visitors should always check it out for the latest information regarding mooring, guide lines or other park facilities.

The [wrecks](#) section contains an up to date list of all currently facilitated wrecks, as well as specific information pages of each wreck. This is where you find both: historical information about the wreck and important facts for safe dive planning as well.

***All diving activities are carried out by diver's personal risk only!***

On our [location](#) pages, one can find more information and map links about the area, dive operators and transportation & accommodation facilities. All information therein is maintained by our volunteer's best efforts only and should not be relied upon as the only source of data. Thus, we accept no responsibility what so ever, over the information provided herein or linked from other sites.

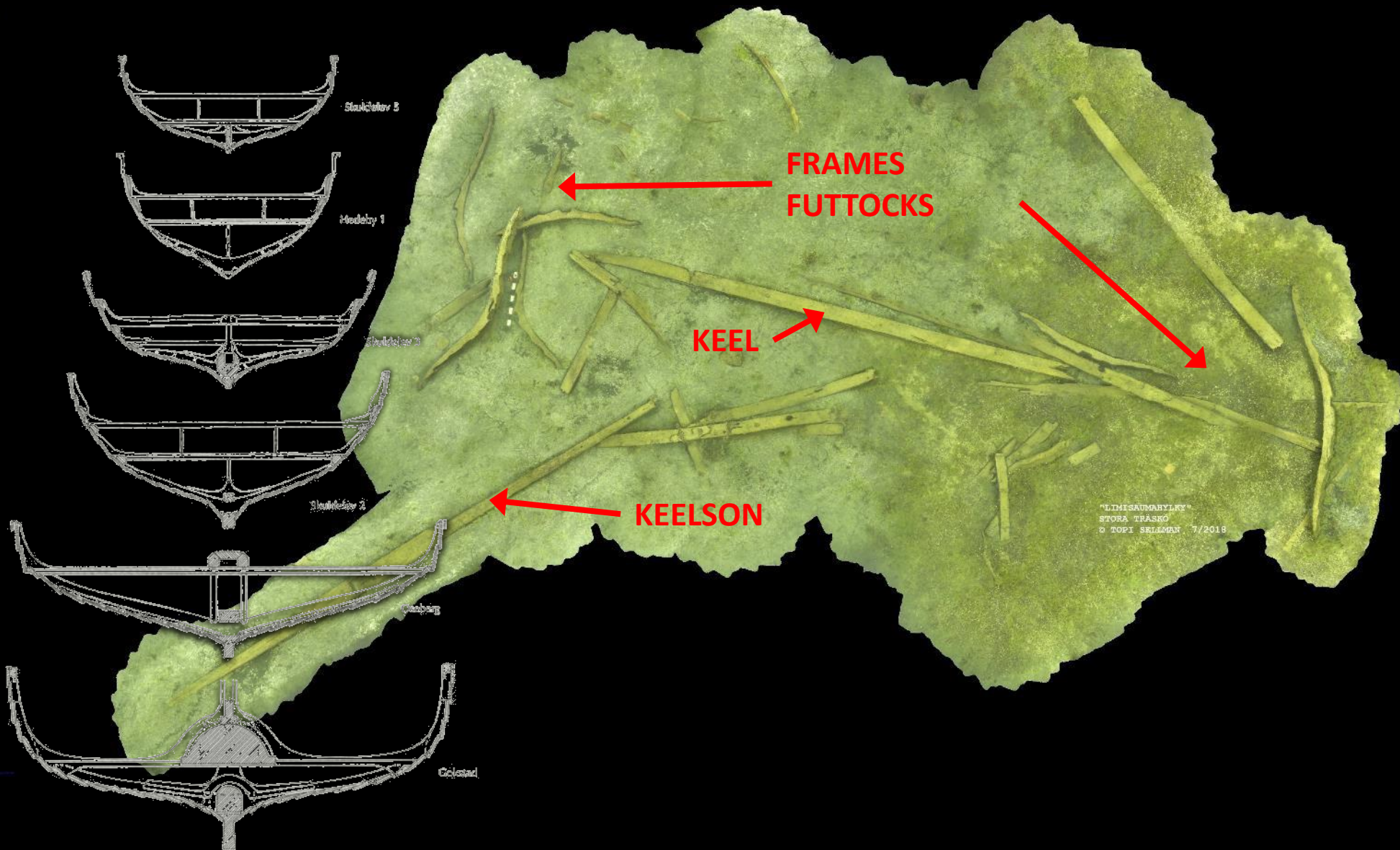


Tiedotteet - Sukellusseura CA





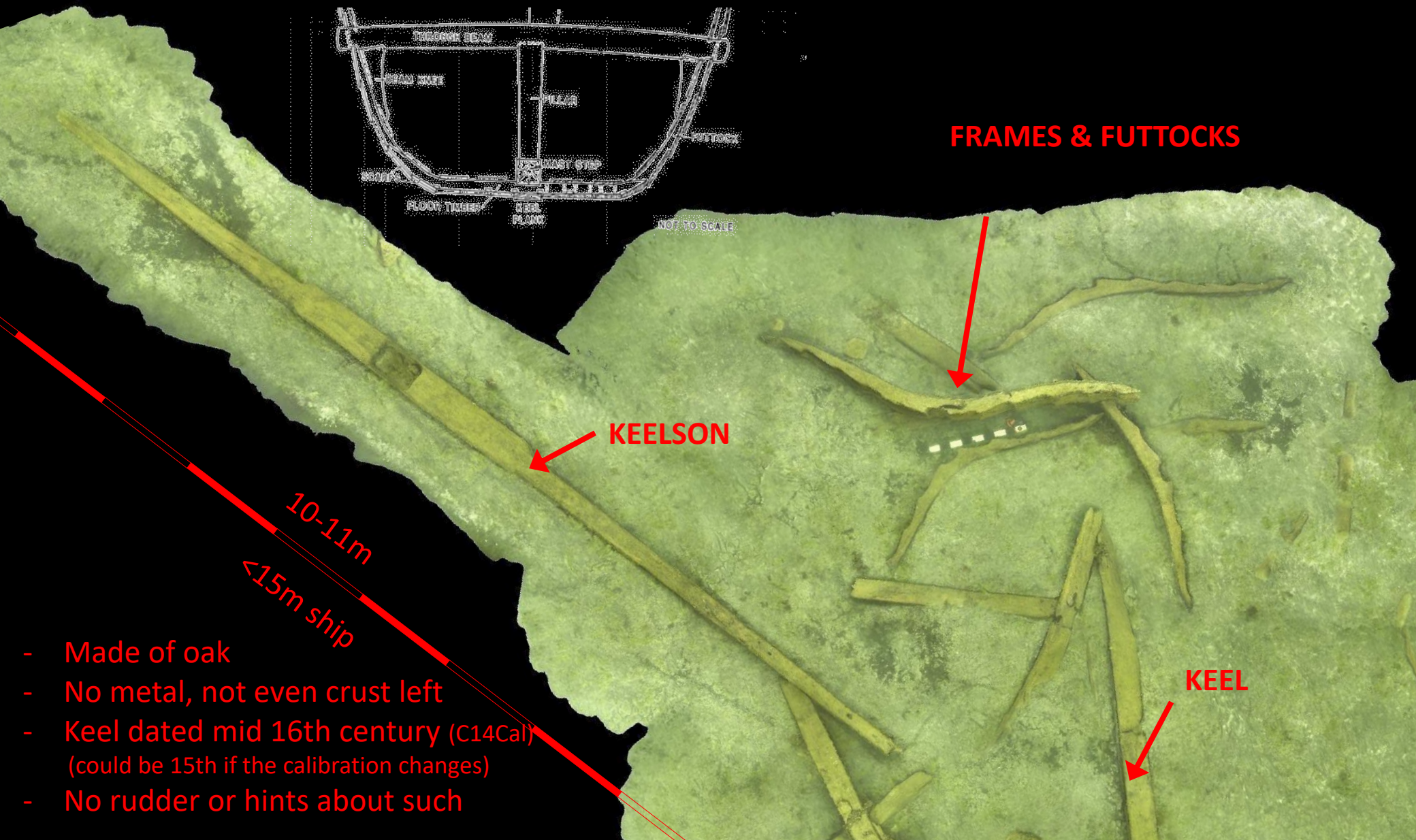
# Clinker wreck – an interesting new wreck







# Clinker wreck – an interesting new wreck



- Made of oak
- No metal, not even crust left
- Keel dated mid 16th century (C14Cal)  
(could be 15th if the calibration changes)
- No rudder or hints about such





# Clinker wreck – "south frames"



- Made of oak
- 14th century (C14cal)  
(range: 1300-1420)



Sukkelajen 3



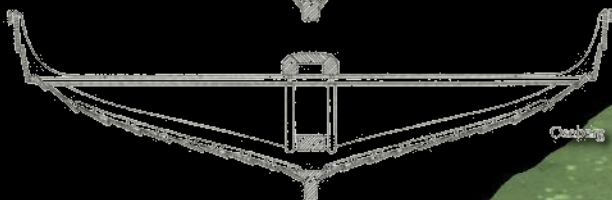
Hodelry 1



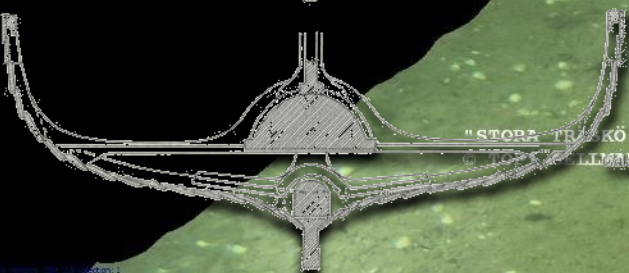
Sukkelajen 3



Sukkelajen 1



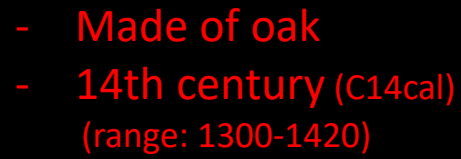
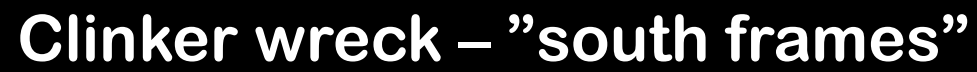
Oskari



"STORA TRÄSKÖ POHJATUKKI 2"

© 2018 J. LILJAN 9/2018





10. The following table shows the number of people who attended the 2004 Summer Olympics in Athens, Greece, by country.





# Clinker wreck – "south frame 1" - extrapolation

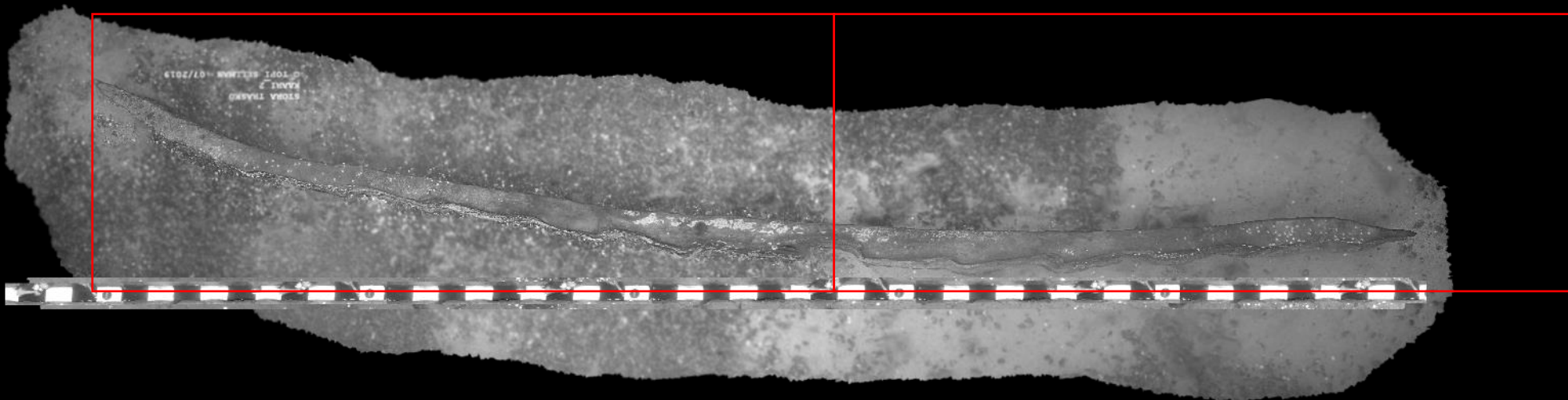


B2 Extrapolation to symmetric by keel

280cm per side

560cm bottom frame width

280cm per side



# Working environment of a marine archaeologist

